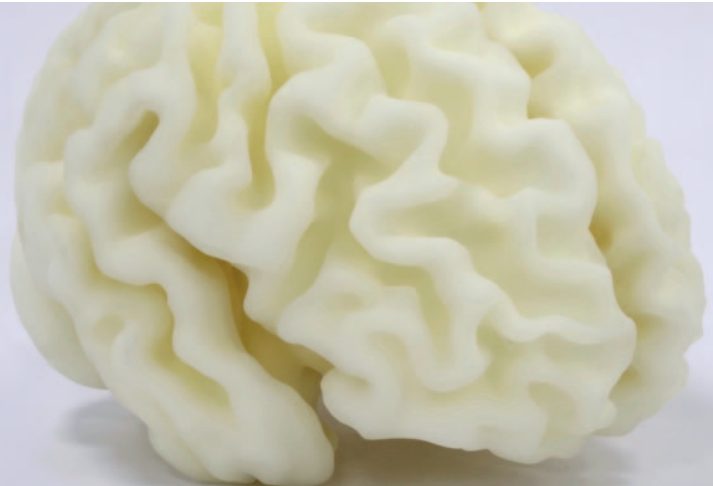


ABS-M30i

Fused Deposition Modelling
(FDM)



Biocompatible and food-contact certified material

The high strength, durability and fine feature detail of ABS-M30i makes it an ideal material for the medical, pharmaceutical and food packaging industries. ABS-M30i parts can be gamma or EtO sterilised, are biocompatible and compliant with ISO 10993 USP Class VI.

The material is suited for production parts as well as concept modelling, function testing and manufacturing tools.

Why choose ABS-M30i?

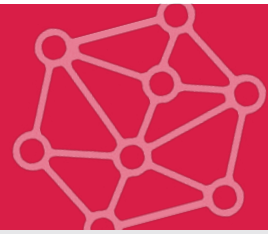
- Good tensile, flexural and impact strength
- Biocompatible (ISO 10993, USP Class VI)
- Food contact certification (NSF 51)
- Gamma and ethylene oxide sterilisable

Applications

- Functional prototyping, end-use parts
- Medical handling
- Food handling
- Pharmaceutical handling and tools

ABS-M30i

Fused Deposition Modelling (FDM)



General properties	Value (XY Axis)	Test method
Colour	Ivory	Visual
Part density	1.04 g/cm ³	ASTM D792

Thermal properties	Value (XY Axis)	Test method
Heat deflection temperature (0.45Mpa)	96° C	ASTM D648
Heat deflection temperature (1.8Mpa)	82° C	ASTM D648

Mechanical properties	Value (XY Axis)	Test method
Tensile strength (ultimate)	36 MPa	ASTM D638
Tensile modulus	2400 MPa	ASTM D638
Elongation at break	4%	ASTM D638
Flexural strength	61 MPa	ASTM D790
Flexural modulus	2300 MPa	ASTM D790
Impact strength – Izod (notched)	139 J/m	ASTM D256
Impact strength – Izod (un-notched)	283 J/m	ASTM D256

Get a quote for your parts at rapidfab.ricoh-europe.com

Have a question? Call our friendly team on

+44 (0) 800 304 7196

Specifications are subject to change without notice.

The technical data indicated above is an average value of the test result of a part created under proper management and appropriate conditions.
The value is for reference and is not guaranteed.